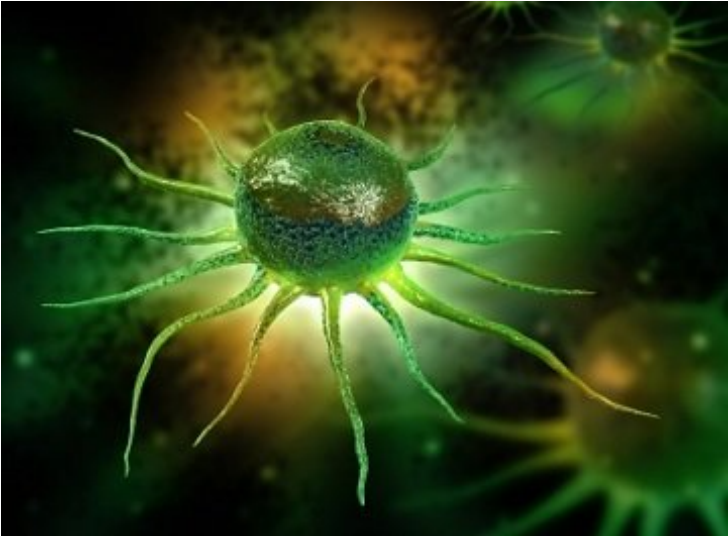


## Philips to collaborate with Indica Labs

20 January 2015 | News | By BioSpectrum Bureau

### Philips to collaborate with Indica Labs



Royal Philips has announced that it will further support efforts of oncology researchers to analyze pathology samples by offering advanced image analysis algorithms from Indica Labs, as part of its Digital Pathology Solutions offerings. The collaboration will allow pathology researchers to apply intelligent algorithms to digitized pathology slides, which may enhance their ability to detect, process and extract information from tissue samples than currently possible using a conventional microscope.

"Digital pathology is the stepping stone to unlock the huge potential of data mining. More information from tissue samples could bring new insights in cancer care that support personal treatment, and ultimately will save patients' lives," said Mr Perry van Rijsingen, general manager of Philips Digital Pathology Solutions.

By using the combined Philips Digital Pathology Solution and Indica's HALO image analysis platform, researchers will benefit from a streamlined image analysis workflow and improved productivity. Additionally, they will be able to extract more thorough information from tissue samples, enabling more insightful analysis than possible, all while generating those results in a matter of hours or even minutes versus days.

According to Mr Steven Hashagen, CEO Indica Labs, "Digital pathology offers significant opportunity to arm scientists in oncology and pathology with the quantitative information they need in their research to improve the cancer care process. By incorporating the high-quality innovation of Philips' digital imaging and our precision HALO analysis platform, they have the tools to further investigate the predictive response of certain therapy with the ultimate goal to provide a personalized cancer treatment plan."

Philips offers Indica's HALO as an option with its Digital Pathology Solution for Research Use Only.