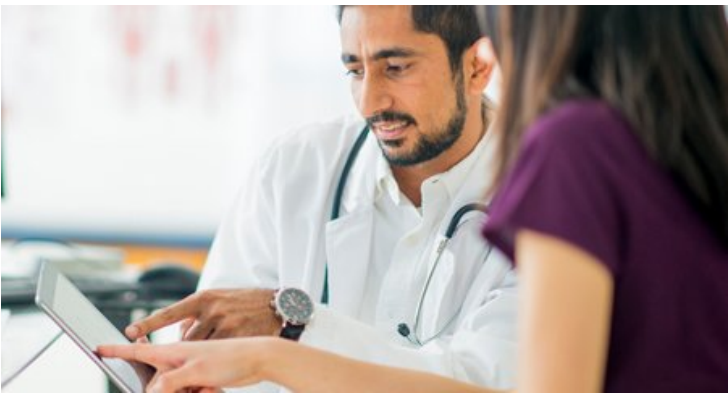


## **Redcliffe Labs introduces first ever AI-based clinical reporting in collaboration with Abbott**

07 August 2023 | News

**Collaboration between Redcliffe Labs and Abbott has been instrumental in successfully implementing the AlinIQ CDS system**



Noida-based startup Redcliffe Labs has collaborated with Abbott India, a global healthcare giant to introduce Clinical Decision Support (CDS) also known as AlinIQ, powered by various proprietary technologies including Big Data Engines and Artificial Intelligence (AI).

This groundbreaking development aims to revolutionise healthcare, offering promising solutions to enhance patient care and convenience.

Redcliffe Labs has taken a significant step forward by becoming the first in the diagnostics industry to adopt the newly launched AI-based AlinIQ Clinical Decision Support system. The rollout took 24 months towards implementing the advance platform. This cutting-edge technology empowers consumers but also clinicians and other healthcare professionals with unparalleled insights and recommendations, revolutionizing medical decisions.

The CDS system goes beyond traditional laboratory reporting by utilising AI-driven algorithms to apply decision-making to individual patient cases automatically. It enables healthcare professionals to access scientific interpretations based on clinical recommendations, providing enhanced insights for better treatment decisions.

By adopting the latest AI technology, Redcliffe Labs is leading the way toward a more personalised and precise approach to healthcare, contributing to a brighter and healthier future for every Indian.