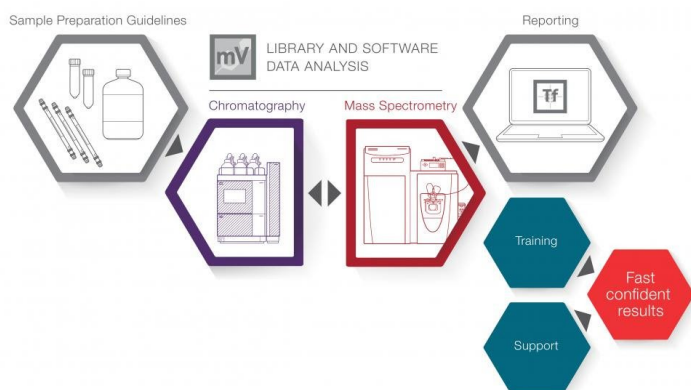


Thermo Fisher launches LC-MS workflow for targeted toxicology analysis

25 September 2020 | News

The new Thermo Scientific Tox Explorer Collection offers a comprehensive LC-MS workflow for toxicology assays



Clinical research, forensic and anti-doping toxicology laboratories facing the challenges of analyzing increasing numbers of analytes in biological matrices, can now easily and rapidly optimize their liquid chromatography-mass spectrometry (LC-MS) methods for targeted screening and quantification.

The new Thermo Scientific Tox Explorer Collection offers a comprehensive LC-MS workflow for toxicology assays. The Tox Explorer Collection consists of proven and tested methods enabling toxicology laboratories to achieve accurate, high-resolution data, regardless of analyte type, matrix complexities or user expertise. The Tox Explorer Collection consists of a comprehensive library of analytes, allowing for faster identification and targeted screening assays with 1,500 compounds confirmed in a single analysis.

The Thermo Scientific Tox Explorer Collection is comprised of the following components:

- Thermo Scientific Q Exactive Plus Hybrid Quadrupole-Orbitrap mass spectrometer
- Thermo Scientific Vanquish Flex UHPLC system
- Thermo Scientific TraceFinder software
- Thermo Scientific Accucore column and consumables configured for high performance
- An extensive HRAM mzVault library of 1,500+ compounds and database with streamlined data processing and reporting
- Proven method comprising critical hardware parameters along with a step-by-step walkthrough guide for quick start-up and method installation
-

